

Moraxella bovoculi Problems?

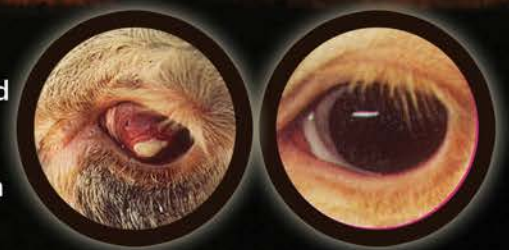
Moraxella bovoculi SOLUTION!

The Addison Autogenous Program

- **Complete Diagnostic and Autogenous Support**
- **Fast Delivery on Initial Order**
- **Excellent Syringeability**
- **Exceptional Safety Record**



MAXI/GUARD® Pinkeye Bacterin has earned the trust of bovine practitioners as the preferred pinkeye preventative when the disease is caused solely by *M. bovis*. However, the problem can be caused by the combination of *M. bovis* and *M. bovoculi* bacteria. When *M. bovoculi* is present, you now have two options. One is to utilize MAXI/GUARD along with the Addison Autogenous Program. The other is utilizing MAXI/GUARD with our new *M. bovoculi* Bacterin. We can assist you from diagnosing the problem to providing a solution!



From the LEADERS in pinkeye prevention!



041117

Addison Biological Laboratory, Inc.

www.addisonlabs.com

800-331-2530

 /AddisonLabs





MAXI/GUARD[®] Autogenous Bacterins

Addison Autogenous Program

- Complete Diagnostic and Autogenous Support
- Fast Delivery on Initial Order
- Excellent Syringeability
- Exceptional Safety Record

What is *Moraxella bovoculi*?

M. bovoculi is a coccoid (spherical shaped) bacterium that causes pinkeye in cattle. It was misidentified (and occasionally still is) as *Moraxella ovis* or *Branhamella ovis* until it was properly named in 2007. Addison Biological Laboratory has isolated this organism for the last several years, but the incidence appears to be increasing. Due to its ability to cause pinkeye year round, *M. bovoculi* has been nicknamed "Winter Pinkeye". It also seems to be less sensitive to some traditional treatments for pinkeye, making it tougher to treat.

How does *Moraxella bovoculi* differ from *Moraxella bovis*?

M. bovis is a rod shaped bacterium that causes pinkeye in cattle and is much more common than *M. bovoculi*. *M. bovis* is more commonly found to cause pinkeye in the spring and summer months. Due to the very high quality of commercial pinkeye preventatives available that contain *M. bovis* (such as MAXI/GUARD Pinkeye Bacterin), it is usually easy to prevent.

What do I do if I have a pinkeye break and how do I determine if the problem is *Moraxella bovoculi*?

The only way to confirm if a pinkeye break is caused by *M. bovoculi* or *M. bovis* is to have a diagnostic laboratory, like ours, analyze a sample taken from the eyes of affected cattle. If the breaking herd was properly vaccinated by MAXI/GUARD Pinkeye Bacterin, please contact us by calling 800-331-2530. We will ask a series of questions to assess the situation and send a pinkeye outbreak kit to assist you in obtaining the best possible sample. After we receive the kit back from you, our skilled diagnosticians will soon be able to determine what caused the pinkeye break. All diagnostic work in these cases is performed at no charge.

What is the best way to control pinkeye if I have a *Moraxella bovoculi* problem?

When *M. bovoculi* is present, you now have two options. One is to utilize MAXI/GUARD along with the Addison Autogenous Program. The other is utilizing MAXI/GUARD with our new *M. bovoculi* Bacterin. We can assist you from diagnosing the problem to providing a solution!

How long does it take to get an autogenous bacterin made?

After we receive your confirmed order, it typically takes approximately 14 days to get an autogenous serial delivered to you for a first time order.

MAXI/GUARD[®]



D41117

Addison Biological Laboratory, Inc.
www.addisonlabs.com
info@addisonlabs.com
800-331-2530
 /AddisonLabs

